

# Sustainable

**PROFESSIONAL  
MANUFACTURER**



[www.ortek.com](http://www.ortek.com)



OEM/ODM WELCOME

# Bluetooth Keyboard



## WKB-850 II

**OS Compatibility**  
for iPad Pro 11-inch  
(4th generation)  
for iPad Air  
(5th / 4th / 3rd generation)  
for iPad  
(7th / 8th / 9th /10th generation)

**Key Layout**  
80 keys

**Key Structure**  
Scissors type

**Battery Type**  
Li-ion battery

**Power Consumption**  
Working: 15 mA  
Sleeping: 60 uA

**Battery Capacity**  
300 mA

**Charging Port**  
USB-C

**Charging time**  
about 2.5 hrs

**Bluetooth Spec**  
BT 5.1

**Dimension**  
Open: 462.7x262.5x11mm  
Close: 191.5x262.5x20.5mm

**Weight**  
805 g



## WKB-850/PRO

**OS Compatibility**  
WKB-850  
for iPad Air 3/iPad 7/8th  
WKB-850PRO  
for iPad Pro 11-inch  
for New iPad Air 4

**Key Layout**  
80 keys

**Key Structure**  
Scissors type

**Battery Type**  
Li-ion battery

**Power Consumption**  
Working: 15 mA  
Sleeping: 60 uA

**Battery Capacity**  
300 mA

**Charging Port**  
USB-C

**Charging time**  
about 2.5 hrs

**Bluetooth Spec**  
BT 5.1

**Dimension**  
Open: 460x265x12.5mm  
Close: 190x265x21.5mm

**Weight**  
630 g



## WKB-1700M1

**OS Compatibility**  
MAC OS X v10.4 or later

**Key Structure**  
Scissors type

**Battery Type**  
2 AAA Batteries

**Power Consumption**  
Working: < 10mA  
Sleeping: 60uA

**Dimension**  
398x124x20 mm



## WKB-2360

**OS Compatibility**  
Win OS/Mac OS  
Android/iOS

**keycaps Structure**  
Scissors type

**Power Consumption**  
Working: 3 mA  
Sleep: 30uA

**Dimension**  
320x96x8.1 mm  
case: 153x102x20.5 mm



## SKB-700

**OS Compatibility**  
Mac OS 9.2 or later  
iOS 4.3 or later

**Key Structure**  
Scissors type

**Dimension**  
400 x 126 x 13.5 mm



## WKB-2380C

**OS Compatibility**  
Win OS/Mac OS  
Android/iOS

**keycaps Structure**  
Scissors type

**Power Consumption**  
Working: 3 mA  
Sleep: 100uA

**Dimension**  
298.5x95.5x5.5mm(open)



## WKB-700BT

**OS Compatibility**  
Mac OS  
Win OS

**Key Structure**  
Scissors type

**Dimension**  
400 x 126 x 20 mm



## WKB-2376M

**OS Compatibility**  
Win OS/iOS  
Android

**Key Structure**  
Scissors type

**Power Consumption**  
Working: 0.5 mA  
Sleep: 100uA

**Dimension**  
291x100x7 mm(open)





Portrait & landscape

**WKB-850 II**

**OS Compatibility**  
for iPad Pro 11-inch (4th generation)  
for iPad Air (5th / 4th / 3rd generation)  
for iPad (7th / 8th / 9th / 10th generation)

**Key Layout**  
80 keys

**Key Structure**  
Scissors type

**Battery Type**  
Li-ion battery

**Power Consumption**  
Working: 15 mA  
Sleeping: 60 uA

**Battery Capacity**  
300 mA

**Charging time**  
about 2.5 hrs

**Continuous Usage**  
20 hrs

**Charging Port**  
USB-C

**Bluetooth Spec**  
BT 5.1

**Dimension**  
Open: 462.7x262.5x11mm  
Close: 191.5x262.5x20.5mm

**805 g**

## Bluetooth Keyboard

for iPads in different generation



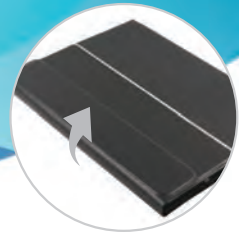
- Magnetic detachable protective case for iPads
- Built-in Apple Pencil holder
- Touchpad: Mouse tapping and multi-finger gestures function
- Hinge for steady multi-viewing angles
- Magnetic design for portrait and landscape iPad viewing
- Built-in hall sensor to turns off iPad when folding up
- Bluetooth connection for 2 pairing
- Support Sleep and Wake-up function
- On/Off switch maximizes battery life

Cases available in different generation

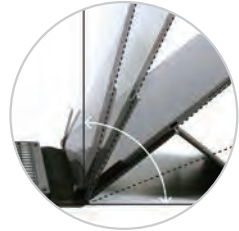




Folio Cover Keeps Apple Pencil in (iPad Pro)



Support Hall Sensor



multi-viewing angles

## Bluetooth Keyboard

WKB-850: for iPad Air(3rd generation)/iPad(7/8th generation)

WKB-850PRO: for iPad Air(4th generation)/iPad Pro 11-inch

- Foldable, space-saving, and portable design
- Touchpad: Mouse tap to click (point and click) and multi-finger gestures function
- Bluetooth keyboard with multi-pairing function
- Support Sleep and Wake-up Function
- On/Off switch maximizes battery life



### WKB-850/PRO

#### OS Compatibility

WKB-850  
for iPad Air 3/iPad 7/8th  
WKB-850PRO  
for iPad Pro 11-inch  
for New iPad Air 4

#### Key Layout

80 keys

#### Key Structure

Scissors type

#### Key Cap travel

1.5 mm

#### Power Consumption

Working: 15 mA  
Sleeping: 60 uA

#### Battery Type

Li-ion battery

#### Charging Current

150 mA

#### Charging time

about 2.5 hrs

#### Continuous Usage

20 hrs

#### Charging Port

USB-C

#### Bluetooth Spec

BT 5.1

#### Dimension

Open: 460x265x12.5mm  
Close: 190x265x21.5mm

#### Weight

630 g



## Bluetooth Keyboard for Mac

Easy switching between 4 paired devices WKB-1700M1

- Support activating Dictation and Siri
- Support activating Do Not Disturb
- On/Off switch maximizes battery life
- Support Sleep and Wake-up Function
- Caps Lock, Pairing/Battery Low LED indicator
- Bluetooth Wireless Technology range up to 10M



Bluetooth pairing up to 4 devices



**WKB-1700M1**

### OS Compatibility

MAC OS X v10.4 or later

### Key Layout

104 keys

### Key Structure

Scissors type

### Key Cap travel

2.2 mm

### Power Consumption

Working: < 10mA

Sleeping: 60uA

### Battery Type

2 AAA Batteries

### Bluetooth Spec

Bluetooth 5.1

### Dimension

398x124x20 mm

### Weight

440 g




SKB-700

## USB Keyboard for Windows & Mac

### Aluminium alloy cover

---

SKB-700

- Plug the USB cable into the system
- This LED will flash five times in Windows system
- Press  key 3 seconds to change mac & windows mode and LED need to Flash five times that will into mode change
- Mac mode : Scroll lock LED on
- Windows mode : Scroll lock LED off

### SKB-700

---

**OS Compatibility**  
Mac OS 9.2 or later  
iOS 4.3 or later

---

**Key Layout**  
110 keys

---

**Key Cap travel**  
1.8 mm

---

**Key Structure**  
Scissors type

---

**Dimension**  
400 x 126 x 13.5 mm

---

**Weight**  
550 ±5 g

---



WKB-700BT

## Bluetooth Keyboard for Windows & Mac

### Aluminium alloy cover

---

WKB-700BT

- 2.4G plus Bluetooth connection, up to 3 devices
- Mac and Windows dual mode function switch
- On/off switch maximizes battery life
- Caps Lock, Pairing/Battery Low LED indicator
- Material: Metal Aluminum (upper case), ABS Plastic (bottom case/keycap)

### WKB-700BT

---

**OS Compatibility**  
Mac OS  
Win OS

---

**Key Layout**  
110 keys

---

**Key Cap travel**  
1.8 mm

---

**Key Structure**  
Scissors type

---

**Dimension**  
400 x 126 x 20 mm

---

**Weight**  
775 ±10 g

---



WKB-2360



Scissor Type Key Module



On/Off Switch Maximizes Battery Life

# Bluetooth Folding Keyboard

Smart Stand for Tablets/Smartphones

WKB-2360

- Smart stand for Tablets/Smartphones
- Rechargeable lithium battery: 120 mA
- Caps Lock, Pairing/Battery Low, Charging LED indicator
- Support Sleep and Wake-up Function
- Key Structure: Scissors type

- for iPad mini
- for iPad / Tablets
- for Smart Phones



WKB-2360

**OS Compatibility**

Win OS/Mac OS  
Android/iOS

**Key Layout**

65 keys

**keycaps Structure**

Scissors type

**Power Consumption**

Working: 3 mA  
Sleep: 30uA

**Dimension**

320x96x8.1 mm  
case: 153x102x20.5 mm

**Weight**

255 g  
(Including Stand: 320g)



WKB-2380C

**LED Status indicator :**

✂1
✂2
✂3
Caps/Pairing/Bat.Low
Charging

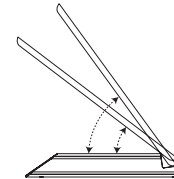


# Bluetooth Folding Keyboard

Smart Stand for Tablets/Smartphones

WKB-2380C

- Touch method : switching between ✂1, ✂2, and ✂3
- Quick switch between iOS, Android, Windows OS by pressing **Fn + 1, 2, 3**
- On/Off switch maximizes battery life
- Hall sensor function
- Rechargeable lithium battery : 160mA
- 40 hrs of continuous usage
- Support Sleep and Wake-up Function



Two viewing angles

WKB-2380C

**OS Compatibility**

Win OS/Mac OS  
Android/iOS

**Key Layout**

83 keys

**keycaps Structure**

Scissors type

**Power Consumption**

Working: 3 mA  
Sleep: 100uA

**Dimension**

298.5x95.5x5.5mm  
folded: 149x95.5x12.6mm

**Weight** 145 g

WKB-2376M

#### OS Compatibility

Win OS/ iOS  
Android

#### Key Layout

65 keys

#### Key Structure

Scissors type

#### Power Consumption

Working: 0.5 mA

Sleeping: 100 uA

#### Dimension

291 x 100 x 7 mm

#### Weight

155 g



## Bluetooth Folding Keyboard

Quick switch between iOS, Android, Windows  
by pressing **Fn + iOS(Q)**, **Android(W)**, **Windows(E)**

- Easy switching between Fn+1(A), 2(S), and 3(D)
- Rechargeable lithium battery : 90 mA
- Pairing/Battery Low, Charging LED indicator
- Support Sleep and Wake-up Function







Taipei Head office



Xiamen Factory



ORtek Technology, Inc.

Since 1989

USA/EUROPE :  
usa-oem@ortek.com

ASIA :  
asia-a@ortek.com

JAPAN :  
jpdep-2@ortek.com



SMETA			
<b>Audit Details</b>			
SMETA Company Reference Number	001-41884542	SMETA Site Reference Number	001-41884554
Business Name / Company Name	XIAMEN ONLEADER TECHNOLOGY CO., LTD.		
Site Name	XIAMEN ONLEADER TECHNOLOGY CO., LTD. #730 (5/F & 6/F)		
Site Address	No. 16 Xiangping West Road, Xiangping Sub-District, Tong An District, Xiamen City, Fujian Province, China	Country	China
Site Manager / Production Manager	Mr. Qiu Yanjun/Manager		
Site phone	0595-7209717	Site e-mail	admin@ortek.com.cn
SMETA Audit Firm:	<input checked="" type="checkbox"/> Bureau Veritas	<input checked="" type="checkbox"/> Bureau B	<input type="checkbox"/> Bureau P
Date of Audit:	March 16, 2023		
<b>Audit Company Name &amp; Logo:</b>		<b>Repeat Client (please tick if you are a repeat client of this audit firm):</b>	
		<input checked="" type="checkbox"/> XIAMEN ONLEADER TECHNOLOGY CO., LTD.	
<b>Audit Conducted By:</b>			
SMETA Audit Company	<input checked="" type="checkbox"/> Functional	<input type="checkbox"/> Product	<input type="checkbox"/>
Business Owner	<input type="checkbox"/> ISO	<input type="checkbox"/> Trade Union	<input type="checkbox"/>
Multi-nationality	<input type="checkbox"/> Certified Audit report of this report		
If you have any concerns or queries about this SMETA report or the associated SMETA audit, please contact <a href="mailto:usa-oem@ortek.com">usa-oem@ortek.com</a>			