

WKP-3180N

# Bluetooth Keypad

user manual

Version 1.0 2021

ID NO:

## **About This Manual**

This manual is designed to assist you in installing and using the Bluetooth Keypad. Information in this document has been carefully checked for accuracy; however, no guarantee is given to the correctness of the contents. The information in this document is subject to change without notice.

## **Edition**

1st Edition,

## **Copyright**

© Copyright 2021

This document contains proprietary information protected by copyright. All rights are reserved. No part of this manual may be reproduced by any mechanical, electronic or other means, in any form, without prior written permission of the manufacturer.

## **Trademarks**

All trademarks and registered trademarks are the property of their respective owners.

## **Federal Communications Commission Statement**

This device complies with FCC Rules Part 15.

Operation is subject to the following two conditions:

- This device may not cause harmful interference.
- This device must accept any interference received, including interference that may cause undesired operation.

This equipment has been tested and found to comply with the limits for a class B digital device, pursuant to Part 15 of the Federal Communications Commission (FCC) rules. These limits are designed to provide reasonable protection against harmful interference in a residential installation. This equipment generates, uses, and can radiate radio frequency energy and, if

not installed and used in accordance with the instructions, may cause harmful interference to radio communications. However, there is no guarantee that interference will not occur in a particular installation. If this equipment causes harmful interference to radio or television reception, which can be determined by turning the equipment off and on, the user is encouraged to try to correct the interference by doing one or more of the following measures:

- Reorient or relocate the receiving antenna.
- Increase the separation between the equipment and receiver.
- Connect the equipment into an outlet on a circuit different from that to which the receiver is connected.
- Consult the dealer or an experienced radio/TV technician for help.

## **FCC Caution**

Any changes or modifications not expressly approved by the party responsible for compliance could void the

user's authority to operate the equipment.

The antenna(s) used for this transmitter must not be co-located or operating in conjunction with any other antenna or transmitter.

### **Radiation Exposure Statement:**

This equipment must be installed and operated in accordance with provided instructions and the antenna(s) used for this transmitter must be installed to provide a separation distance of at least 20 cm from all persons and must not be co-located or operating in conjunction with any other antenna or transmitter.

### **Introduction**

Thank you for purchasing the Bluetooth Keypad . This User's Manual contains information that will help to operate the device as well as answering questions about certain special keys and buttons. Please keep this manual in a safe place for future reference.

## **System Requirements**

Windows OS

## **Package Contents**

- Bluetooth Keypad
- USB-A to USB TypeC cable
- User's manual

Note:

There is a power switch on the top of the Bluetooth Keypad. When not in use, please turn to OFF to save battery power.

## **Technical Specifications**

Keypad devices: use HID coordination Bluetooth devices

Keypad Size: close: 117.5\*83\*11.5 mm

Weight: 60g

Keypad layout: 20 keys

Battery Capacity: Li-ion battery 160 mA

Operating voltage: 3.2-4.2 V

Working current: under 3 mA

Sleep current: under 70 uA

Input: 5V  $\overline{\text{---}}$ 1A

Charging time: 1.5- 2hrs

Logo name: Bluetooth keypad

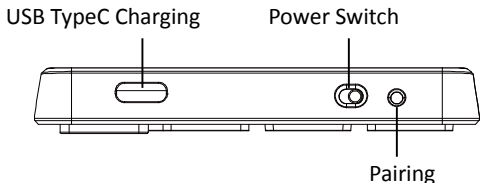
Awaken way: Press any key

### LED lights:

Status	LED Colour	Display
Pairing	Blue	Fast flashing
Battery Low	Blue	Slow flashing
Num Lock	Blue	ON
Charging	Red	ON
Fully Charged	None	OFF

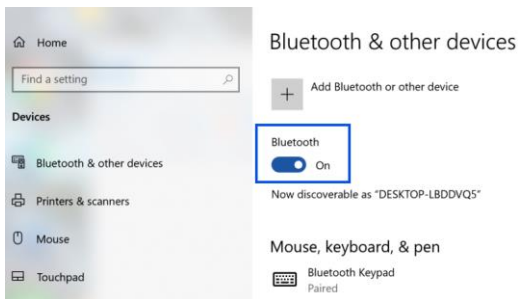
## Bluetooth pairing

- Turn on the power, and press Pairing key to enter pairing mode. Pairing Blue light flashes.



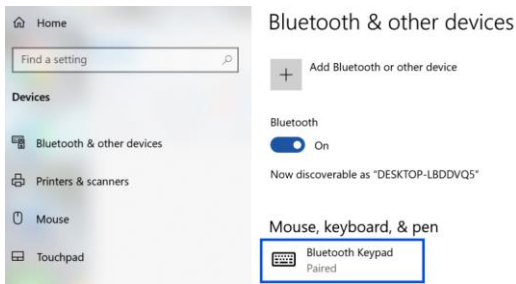
PS: 1. Paring will stop when not paired, if needed, press Pairing key for pairing again. 2. Power Switch: turn on shows green.

- Open the Bluetooth settings and switch Bluetooth to On.





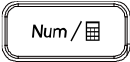
- Select "Bluetooth Keypad" device.



- Bluetooth Keypad is now connected.
- Pairing complete.

## 5. Keypad key function:

Function Name	Num ON	Num OFF
1	1	End
2	2	↓
3	3	Page Down
4	4	←
5	5	
6	6	→
7	7	Home
8	8	↑
9	9	Page Up
0	0	Insert
00	00	
.	.	Delete
Tab	Tab	Tab
+	+	+
-	-	-
*	*	*
/	/	/

Enter	Enter	Enter
BS/C	Click it once : Backspace switch Hold down the key : Quick access to Calculator All Clear	
	Click it once : Num Lock switch Hold down the key : Quick access to Calculator Application	